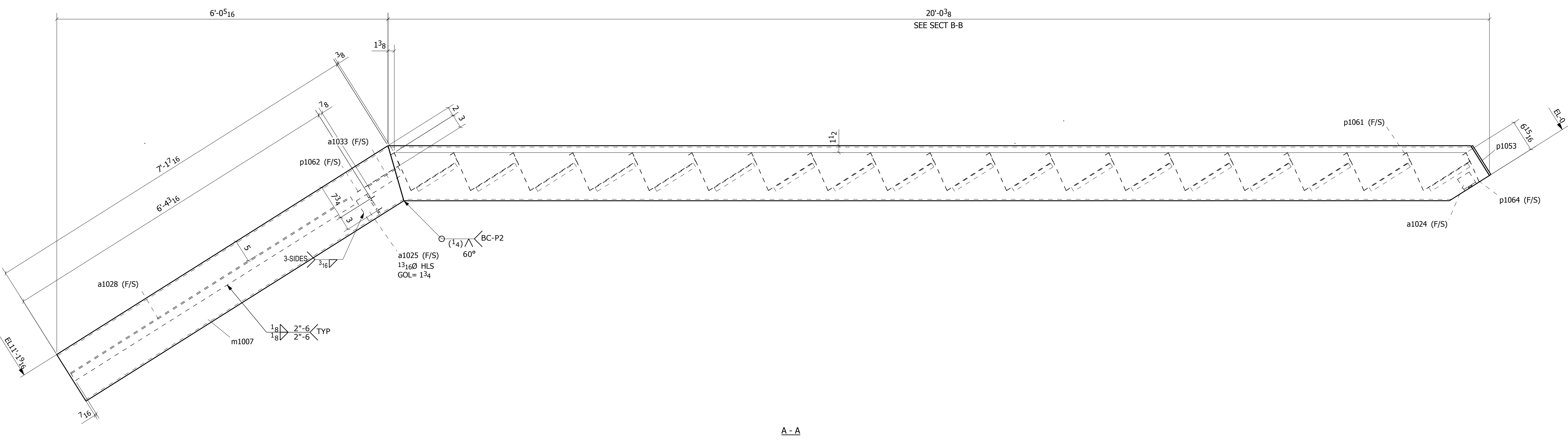


PLAN VIEW

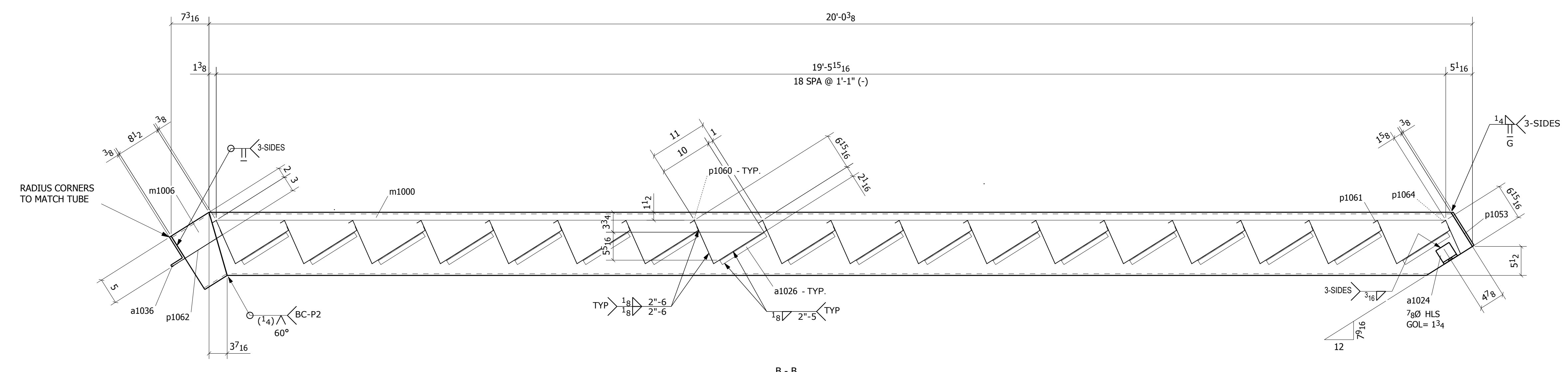
CUT 3"Ø ACCESS HOLES ABOVE BOLT HOLE BELOW. TACK CUT-OUT PIECE TO TOP OF PAN FOR USE IN FIELD.

BILL OF MATERIAL									
ASSEMBLY MARK	SHIPPING MARK	ASST MARK	NO. REQ'D	DESCRIPTION	LENGTH	GRADE	WEIGHT	REMARKS	
			2	STAIR					
		a1024	4	L3X3X3/8	0'-3"	A36	7		
		a1025	2	L3X3X3/8	0'-5 1/2"	A36	7		
		a1026	72	L1X1X1/8	0'-10"	A36	48		
		a1028	2	L2X2X1/4	6'-0 1/8"	A36	38		
		a1033	2	L2X2X1/4	0'-7 3/4"	A36	4		
		a1036	2	L5X3X3/8	0'-3"	A36	5		
		m1000	4	HSS12X3X5/16	20'-0 3/8"	A500-GR.B	2228	BC-2E PREP-1E	
		m1006	2	HSS12X3X5/16	0'-8 1/2"	A500-GR.B	39	BC-1E PREP-1E	
		m1007	2	HSS12X3X5/16	7'-1 7/16"	A500-GR.B	396	BC-1E PREP-1E	
		p1053	4	PL3/8X3	0'-7 1/2"	A36	10		
		p1060	34	BNT PL 1/4ga x	5'-6"	A36	902	BENT	
		p1061	2	BNT PL 1/4ga x	5'-6"	A36	53	BENT	
		p1062	2	BNT PL 1/4ga x	5'-6"	A36	28	BENT	
		p1064	2	BNT PL 1/4ga x	5'-6"	A36	18	BENT	
							TOTAL =	3783	

BOLT SUMMARY - QTY'S ARE FOR ONE ASSEMBLY ONLY



A - A



B - B

- DRAWING NOTES:
- 1) PAINT MEMBERS SPECIFICALLY LISTED ON LINE 2, >>> GREY <<< .
 - 2) m1000, m1006, m1007, a1024, a1036, p1053 .

MATERIAL:	A36	U.N.O.	13/16 Ø	HOLE SIZE:	U.N.O.	A325	U.N.O.	1/4"	BOLT GRADE:	MINIMUM WELD:	U.N.O.	E70XX	ELECTRODE:
PAINT:	GREY	U.N.O.	SSPC-SP3	U.N.O.	DRY FILM THICK:	2.0 mils	U.N.O.						
No.	DATE	REVISIONS											
1	07/13/10	FOR APPROVAL											
2	08/25/10	FOR FABRICATION, PER APPROVALS											
<p align="center">FABRICATORS LOGO</p> <p>STREET ADDRESS: _____ PHONE: (555) 123-4567 CITY, ST ZIP: _____ FAX: (555) 123-4567</p>													
ARCH: Associates, Inc. ENGR: Consulting Engineers CONTR: Contractor Inc.						JOB NAME & LOCATION: ELEMENTARY SCHOOL							
REF: _____ JOB: 10-2175 DRAWN BY: EC DATE: 07/11/10 CHECKED BY: JP DATE: 07/13/10 SHEET:												SHEET TITLE: STAIR No. 2 & 3 - AREA 1 (SEQ-1)	
2 STAIR(S) MARK: 1053S1												1053	